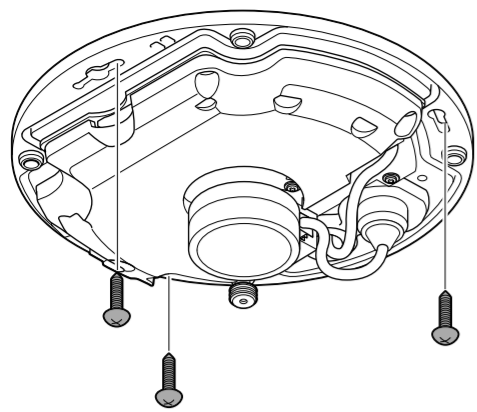


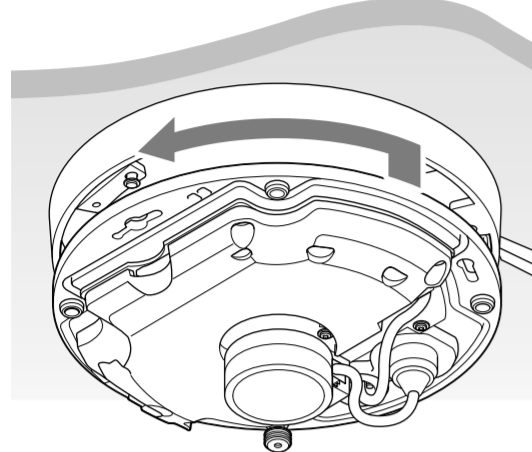
When you do not use the mounting plate

1

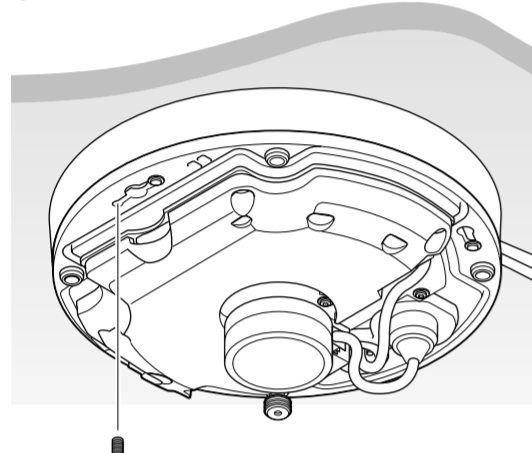


When you use the mounting plate

①

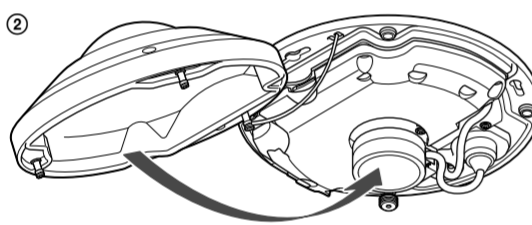


②

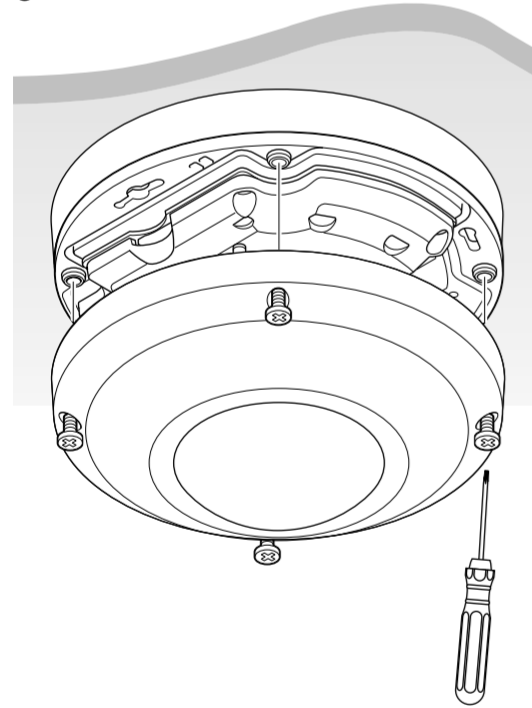


Camera mounting screws (supplied)

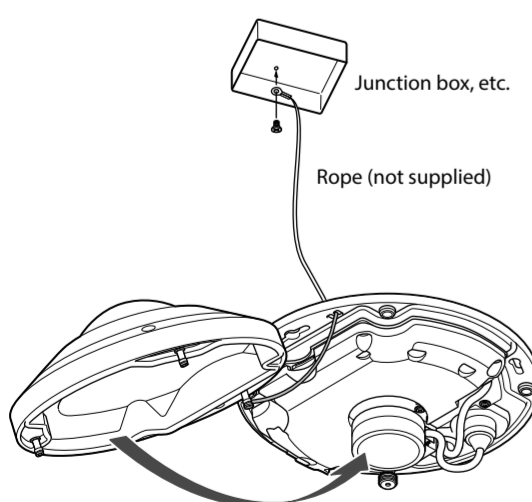
2



③



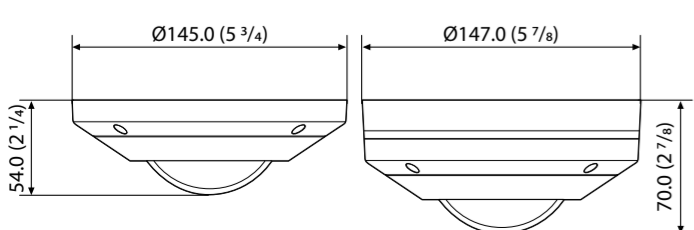
F



G

When you do not use the mounting plate

When you use the mounting plate



Unit: mm (inches)

Installing the Camera

E

1 Attach the camera base.

When you do not use the mounting plate

(When connecting cables from the bottom of the camera)
Secure the camera base on the ceiling/wall with the three screws. Refer to "Mounting screws" for screws to be used.

When you use the mounting plate

- (When connecting cables from the side of the camera)
① Attach the camera base to the mounting plate, then turn the camera base counterclockwise.
② Tighten the camera mounting screws (supplied) with the supplied screwdriver to secure the camera base to the mounting plate.

Note

Do not use other than the supplied screws. Otherwise, the camera unit may not be secure and could fall.

2 Attach the dome case.

- ① Replace the desiccant that is attached to the inside of the dome case, with the supplied desiccant, using the supplied double-sided tape.

Note

When removing the desiccant from the Mylar sheet which is inside of the dome cover, be careful not to deform the Mylar sheet.

- ② Attach the dome case while the spring contact is aligned to the built-in microphone contact.
③ Secure the dome case and camera base by tightening the four screws with the supplied screwdriver.

Note

Be sure that all the screws are tightened correctly. Otherwise, waterproof performance may be impaired.

- ④ Remove the protecting film from the dome cover.

Note

Do not install the camera to the place where the power cable, connecting cables, or connectors are submerged. It may cause water to seep inside the camera, or failure.

Attaching the fall prevention rope

F

If you install the camera in a high place or ceiling, attach the optional fall prevention rope to prevent the camera from falling. Thread the rope through the strap hole of the camera as illustrated, then fix the rope to the junction box, etc., on the ceiling/wall with a screw (not supplied). For details of the fall prevention rope, contact your Sony dealer or sales agent.

Note

When attaching the rope, be sure not to short out the metal parts.

Connection

Connecting to the Network

Connect the LAN connector of the camera to a PoE* supported device (such as a hub) using the network cable (straight, not supplied). The electrical power is supplied through the network cable. For details, refer to the instruction manuals of the PoE supported devices.
(* PoE: The acronym for Power over Ethernet. IEEE802.3af standard compliant devices.)

It is also possible to connect the LAN port of the camera to a router or hub in the network using a network cable (not supplied).

Connecting the Power Source

The camera can be powered in either of the following ways.

- 12 V DC
- Power supply equipment pursuant to IEEE802.3af (PoE* system)

* PoE means Power over Ethernet.

Notes

- Do not turn off the camera immediately after turning it on. Wait for at least five minutes before turning off the camera.
- Do not input 12 V DC power if power is supplied by a PoE system.

Connecting to the power supply equipment pursuant to IEEE802.3af

The power supply equipment pursuant to IEEE802.3af supplies the power through the network cable. For details, refer to the Instruction Manual of the equipment.

Connecting to 12 V DC source

Connect the power input terminal of the I/O cable (black) to a 12 V DC source.

- Use a 12 V DC source isolated from 100 to 240 V AC. Usable voltage range is as follows.

12 V DC: 10.8 V to 13.2 V

- In the USA, the product shall be powered by a UL Listed Class 2 Power Supply Only.

- In Canada, the product shall be powered by a CSA certified Class 2 Power Supply Only.

- Use UL cable (VV-1 style 10368) for 12 V DC connection.

Recommended power cable

CABLE (AWG)	#24	#22	#20
Max. length (m)	9	15	23

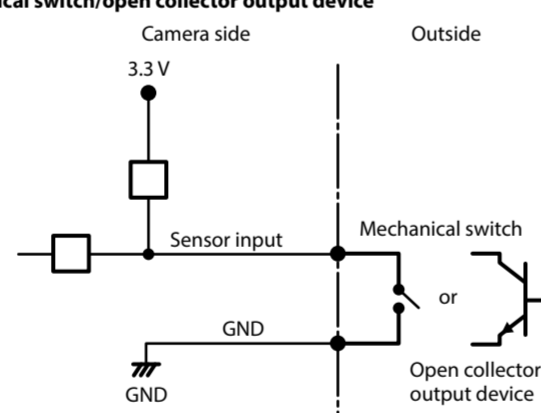
Note

Use the power supply equipment with surge protector.

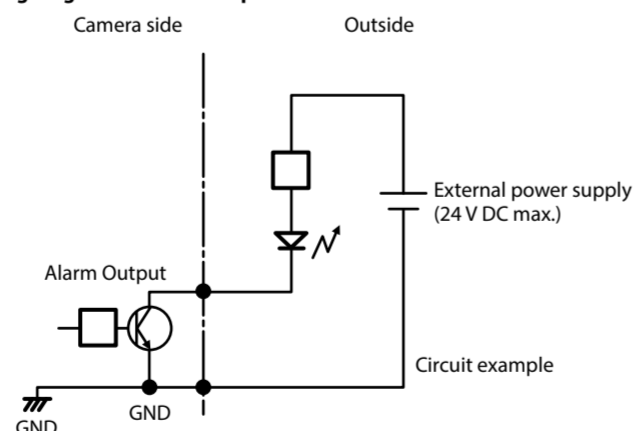
Connecting the I/O Connectors

Wiring diagram for sensor input

Mechanical switch/open collector output device



Wiring diagram for alarm output



Specifications

Compression

Video compression format	JPEG/H.264
Audio compression format	G.711/AAC
Maximum frame rate	1080p mode 30 fps Fisheye mode (H.264) 10 fps Fisheye mode (JPEG) 13 fps

Camera

Image device	1/2.5 type CMOS Effective picture elements: Approx. 4,910,000 F2.0/Auto gain control maximum rate MAX/50 IRE (IP)/10 fps (fisheye mode) Color: 0.7 lx Black & White: 0.3 lx
Minimum illumination	

Lens

Focal length	0.98 mm to 1.12 mm
Maximum relative aperture	F2.0
View angle	Vertical: 182° Horizontal: 182° 500 mm

Interface

LAN port (PoE)	10BASE-T/100BASE-TX, auto negotiation (RJ45)
I/O port	Sensor input: × 1, make contact, break contact Alarm output: × 1 (24 V DC, 0.5 A)
microSD memory card slot	
Microphone input	Minijack (monaural) Plug-in-power supported (rated voltage: 2.5 V DC) Recommended load impedance: 2.2 kΩ Minijack (monaural), Maximum output level: 1 Vrms
Line output	

Others

Power supply	IEEE802.3af compliant (PoE system) 12 V DC ±10%
Power consumption	6.0 W max.
Operating temperature	Start temperature: -20 °C to +50 °C (-4 °F to +122 °F) Working temperature: -30 °C to +50 °C (-22 °F to +122 °F) Storage temperature: -25 °C to +60 °C (-13 °F to +140 °F)
Operating humidity	20% to 90%
Storage humidity	20% to 95%
Dimensions (diameter/height)	145.0 mm × 54.0 mm (5 3/4 inches × 2 1/4 inches), not including the mounting plate

Mass

Approx. 640 g (1 lb 6.6 oz), not including the cables and mounting plate

Supplied accessories	CD-ROM (supplied programs) (1) I/O cable (1) Mounting plate (1) Alignment sticker for the mounting plate (1) Alignment sticker for the camera base (1) Camera mounting screws (1) Double-sided tape (1) Rubber seal plug (1) Rubber washer (1) Safety Regulations, Installation Manual (1 set) Screwdriver (1) Desiccant (1)
----------------------	---

Design and specifications are subject to change without notice.

Recommendation of Periodic Inspections

In case using this device over an extended period of time, please have it inspected periodically for safe use. It may appear flawless, but the components may have deteriorated over time, which may cause a malfunction or accident. For details, please consult the store of purchase or an authorized Sony dealer.